

MEINE LIPPEN, SIE KÜSSEN SO HEISS
(from "Giuditta")

FRANZ LEHAR

Allegro

Musical staff with treble clef, key signature of one sharp (F#), and 3/4 time signature. It begins with a forte (ff) dynamic marking and contains several measures of eighth and sixteenth notes.

Musical staff with treble clef, key signature of one sharp, and 3/4 time signature. It includes tempo markings for "Rit." (ritardando) and "Allegretto moderato (non troppo) a tempo". A forte (fz) dynamic marking is present.

Musical staff with treble clef, key signature of one sharp, and 3/4 time signature. It features a "pizz" (pizzicato) marking and is numbered 1 and 2.

Musical staff with treble clef, key signature of one sharp, and 3/4 time signature. It is numbered 3, 4, 5, and 6.

Musical staff with treble clef, key signature of one sharp, and 3/4 time signature. It is numbered 7, 8, 9, and 10.

Musical staff with treble clef, key signature of one sharp, and 3/4 time signature. It is numbered 11 and includes "arco" and "pizz" markings.

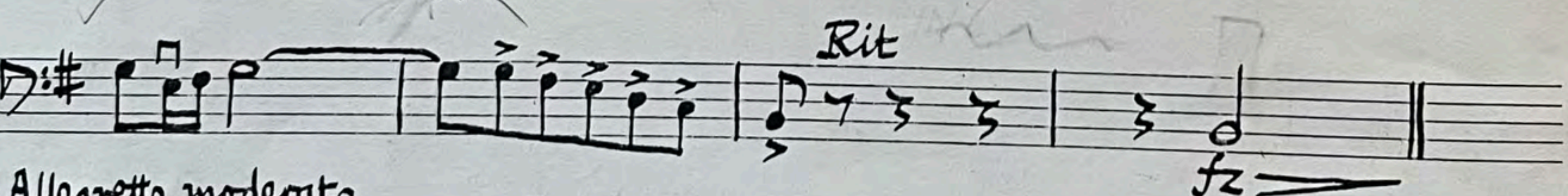
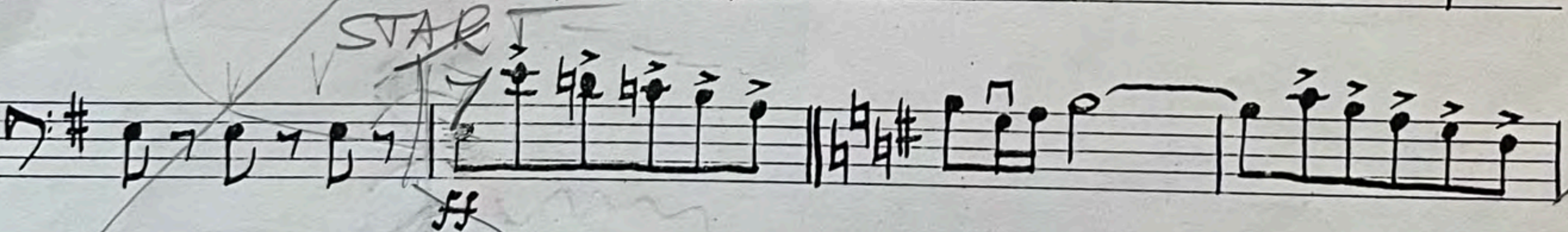
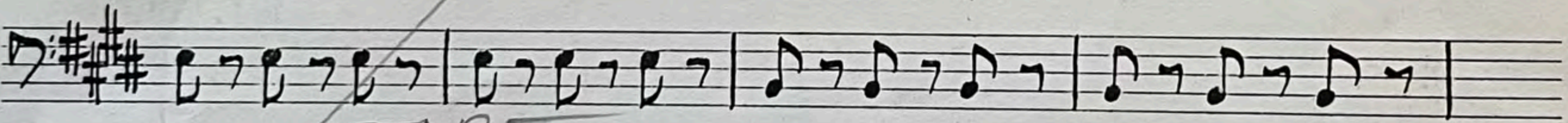
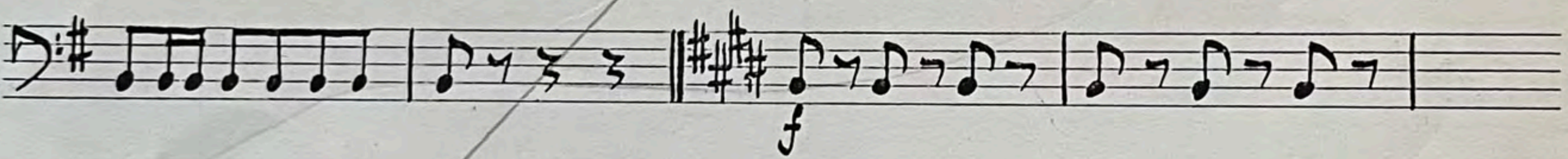
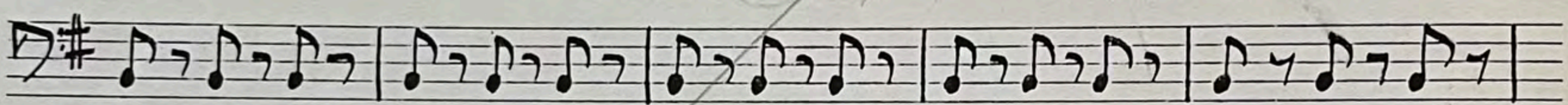
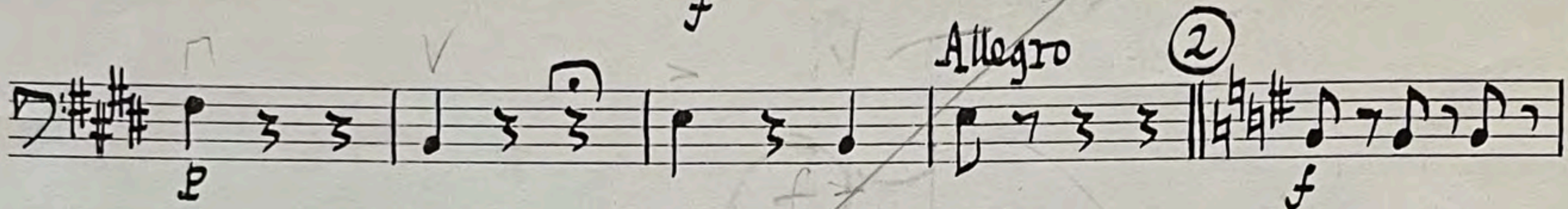
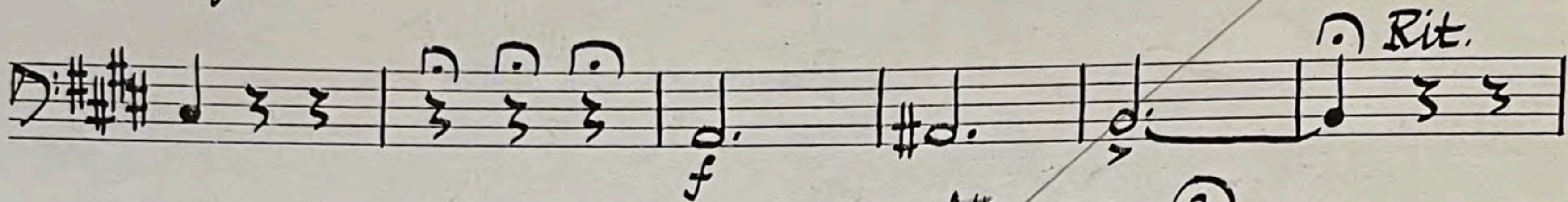
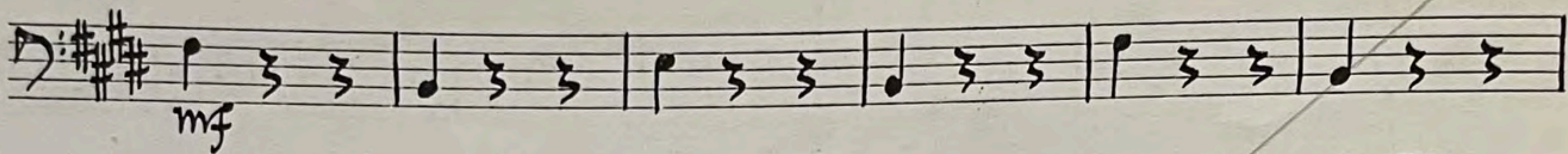
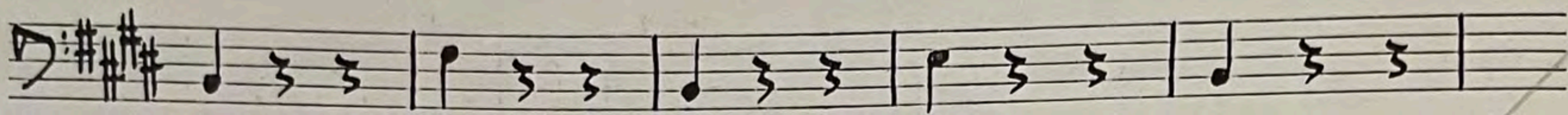
Musical staff with treble clef, key signature of one sharp, and 3/4 time signature. It includes "Rit." and "a tempo" markings, and a mezzo-forte (mf) dynamic marking.

Musical staff with treble clef, key signature of one sharp, and 3/4 time signature. It includes "arco" and "Rit." markings, and ends with a key signature change to three sharps (F#, C#, G#).

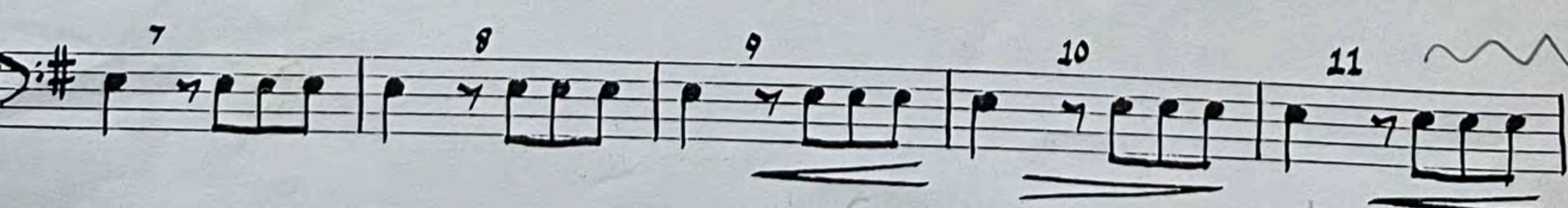
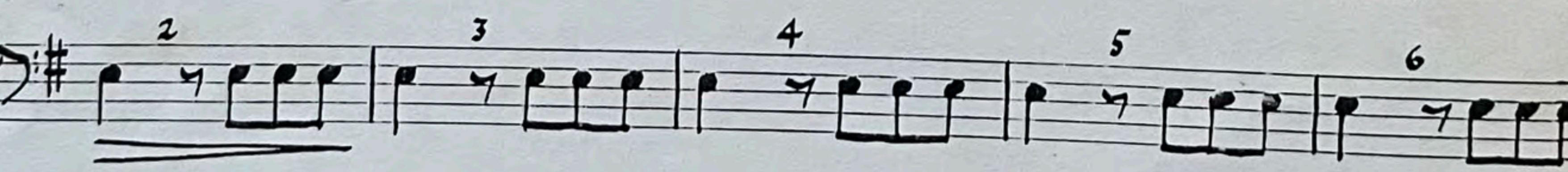
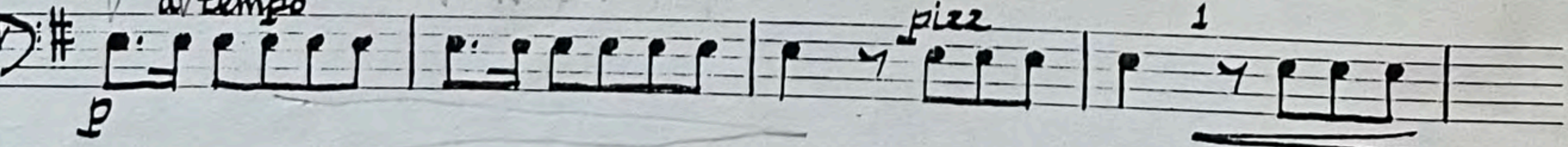
① Valse moderato
pizz a tempo

Musical staff with treble clef, key signature of three sharps (F#, C#, G#), and 3/4 time signature. It begins with a piano (p) dynamic marking.

Musical staff with treble clef, key signature of three sharps, and 3/4 time signature. It includes an "arco" marking and a mezzo-forte (mf) dynamic marking.



③ Allegretto moderato
al tempo



(Bss.)

a tempo

Handwritten musical notation on a single staff. It begins with a treble clef and a key signature of one sharp (F#). The notation includes a half note, followed by a quarter rest, and then a quarter note. Above the staff, there are markings for *arco* (with a bow hair symbol), *pizz* (pizzicato), and *Rit.* (ritardando). The piece concludes with a double bar line.

a tempo

Handwritten musical notation on a single staff. It begins with a treble clef and a key signature of one sharp (F#). The notation consists of a continuous eighth-note pattern. Above the staff, there is a marking for *arco*. Below the staff, there is a dynamic marking of *p* (piano).

Handwritten musical notation on a single staff. It begins with a treble clef and a key signature of one sharp (F#). The notation includes a half note, followed by a quarter rest, and then a quarter note. Above the staff, there are markings for *Rit.* and *a tempo* (circled in 4). Below the staff, there is a marking for *pizz* and a dynamic marking of *p*.

Handwritten musical notation on a single staff. It begins with a treble clef and a key signature of three sharps (F#, C#, G#). The notation consists of a continuous eighth-note pattern.

Handwritten musical notation on a single staff. It begins with a treble clef and a key signature of three sharps (F#, C#, G#). The notation includes a half note, followed by a quarter rest, and then a quarter note. Above the staff, there is a marking for *a tempo* and *arco*. Below the staff, there is a dynamic marking of *mf* (mezzo-forte).

Handwritten musical notation on a single staff. It begins with a treble clef and a key signature of three sharps (F#, C#, G#). The notation consists of a continuous eighth-note pattern. Below the staff, there is a dynamic marking of *f* (forte).

Handwritten musical notation on a single staff. It begins with a treble clef and a key signature of three sharps (F#, C#, G#). The notation includes a half note, followed by a quarter rest, and then a quarter note. Above the staff, there are markings for *ff* (fortissimo) and *Rit.* (ritardando).

Handwritten musical notation on a single staff. It begins with a treble clef and a key signature of three sharps (F#, C#, G#). The notation includes a half note, followed by a quarter rest, and then a quarter note. Above the staff, there is a marking for *Rit.* (ritardando). Below the staff, there is a dynamic marking of *f* (forte).

Handwritten musical notation on a single staff. It begins with a treble clef and a key signature of three sharps (F#, C#, G#). The notation includes a half note, followed by a quarter rest, and then a quarter note. Above the staff, there is a marking for *ff* (fortissimo). Below the staff, there is a dynamic marking of *ff*.

Four empty musical staves at the bottom of the page.